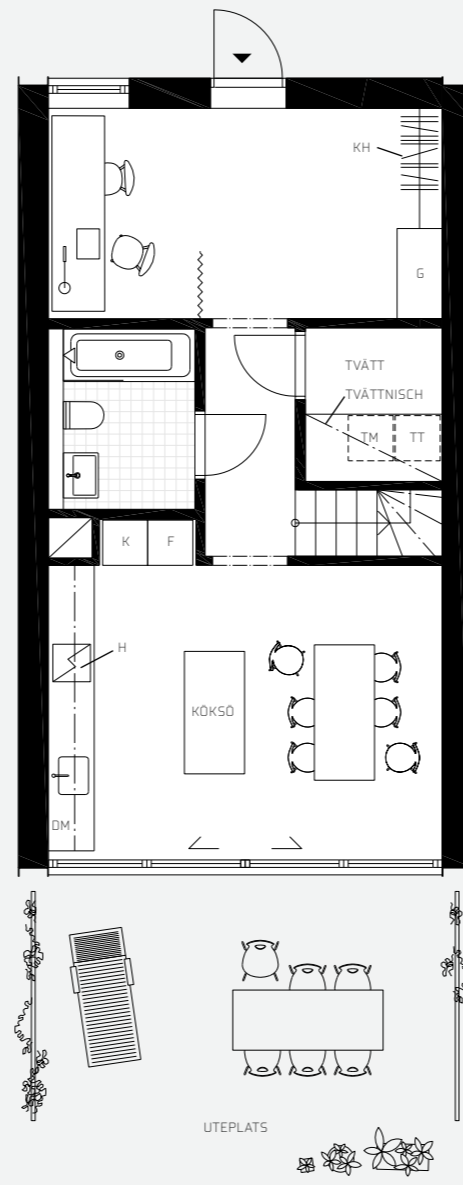


SPALJÉN

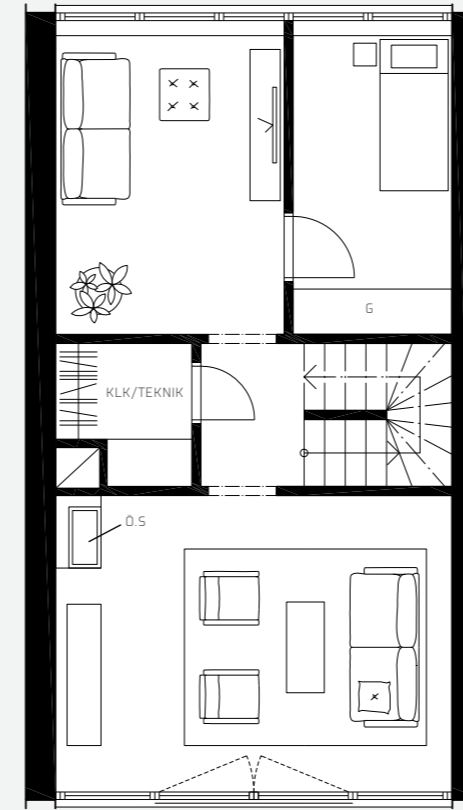
(S1 - S5) 159 KVM

3 PLAN
UTEPLATS
TAKTERRASS
4-6 SOVRUM

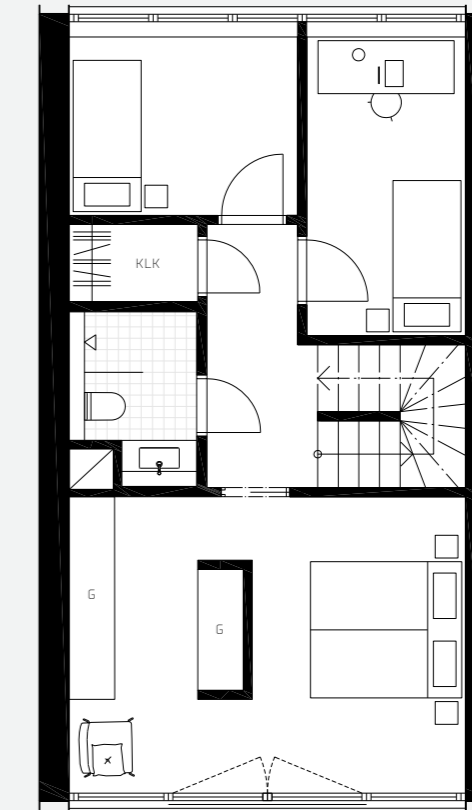
ENTRÉPLAN:



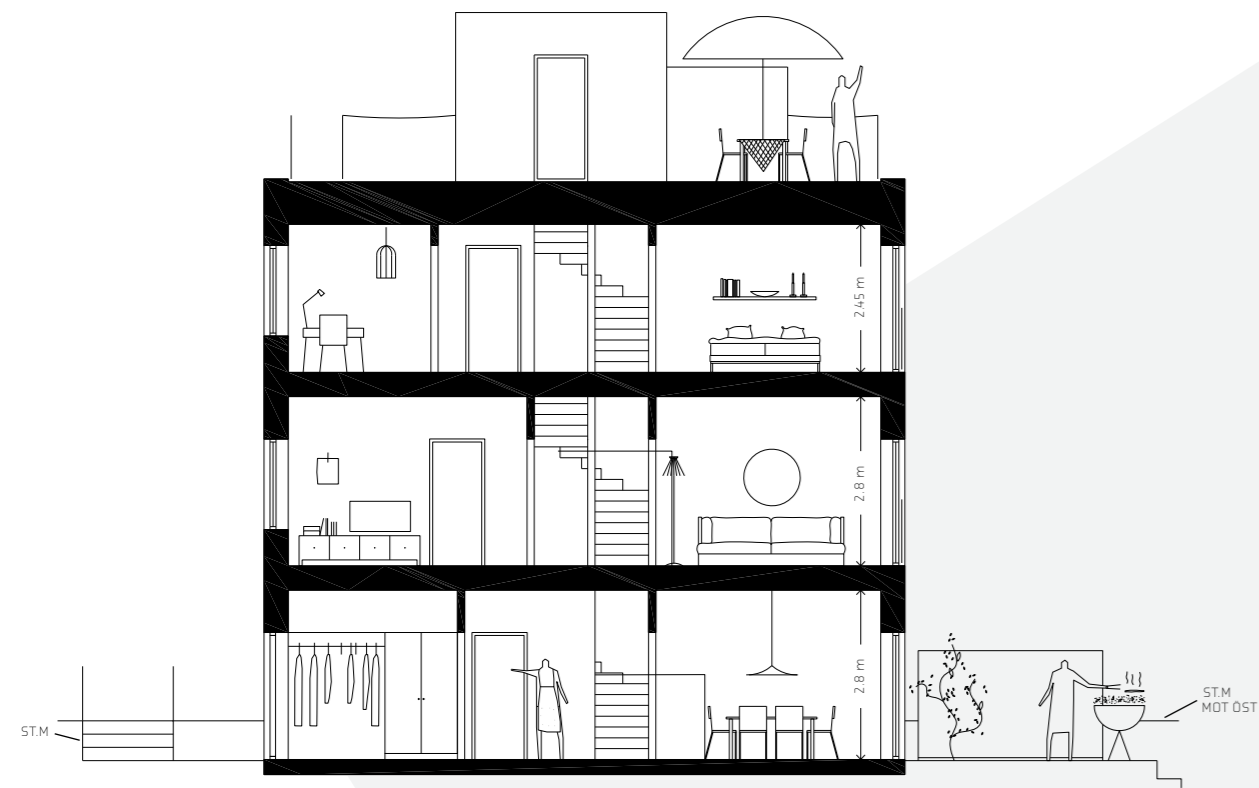
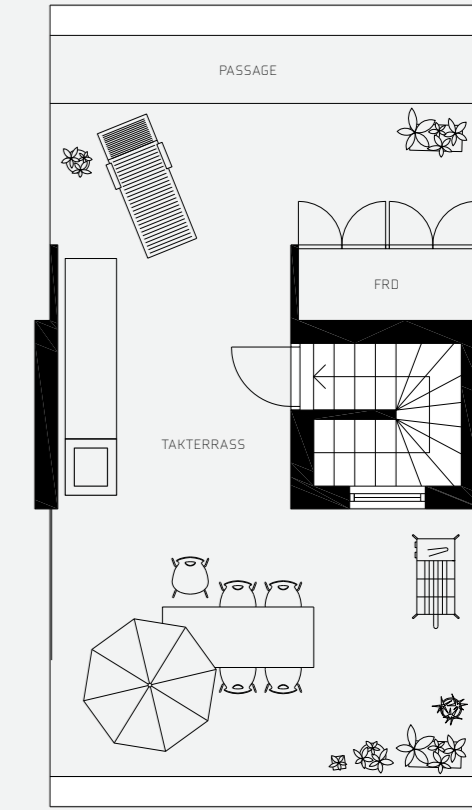
PLAN 1:



PLAN 2:



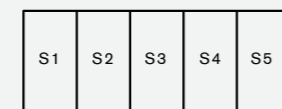
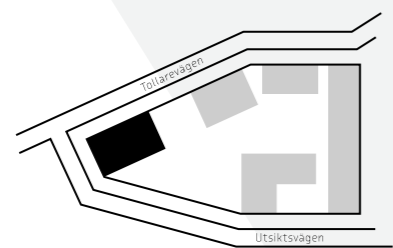
TAKTERRASS:



PRINCIPSEKTION (EJ SKALENLIG)

FÖRKLARINGAR:

- ▶ Entré
- ST.M Stödmur
(Stödmur varierar i höjd: ca -1,4 - +0,6 m)
- FRD Förråd
- G Garderob
- K/F Kyl/frys
- DM Diskmaskin
- H Induktionshäll
- TM/TT Tvättmask./torkt.
- Ö.S Öppen spis (Kamin)
- KH Kapphylla
- ☐ Schakt



AVVIKELSER KAN FÖREKOMMA

