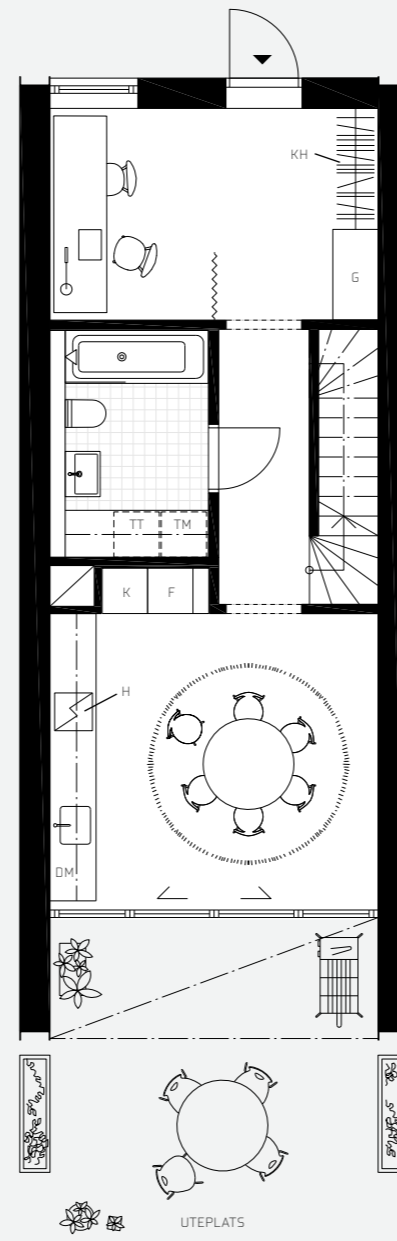


# VERANDAN

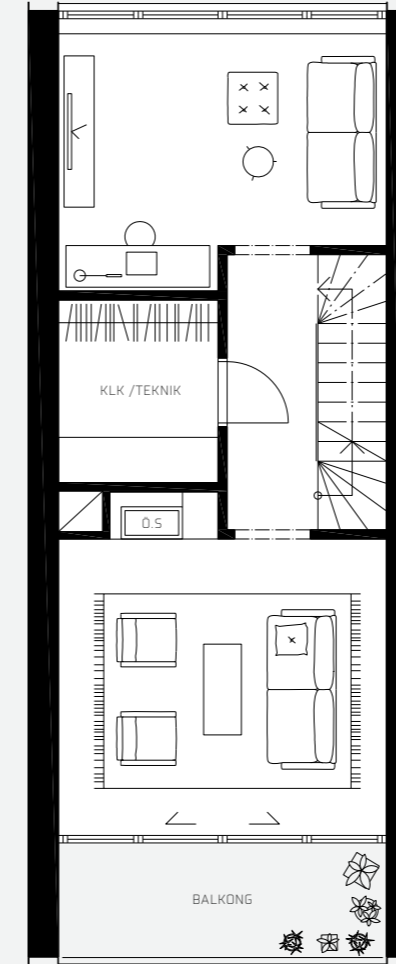
(V1 - V5) 140 KVM

3 PLAN  
UTEPLATS  
2 BALKONGER  
TAKTERRASS  
3-5 SOVRUM

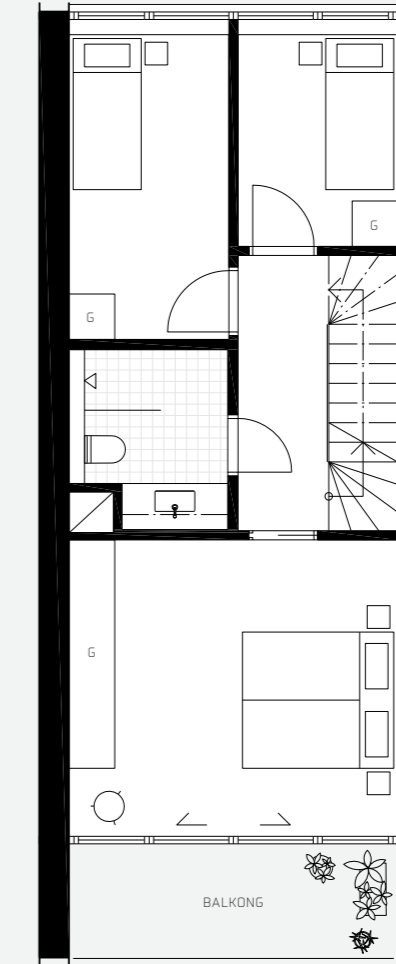
ENTRÉPLAN:



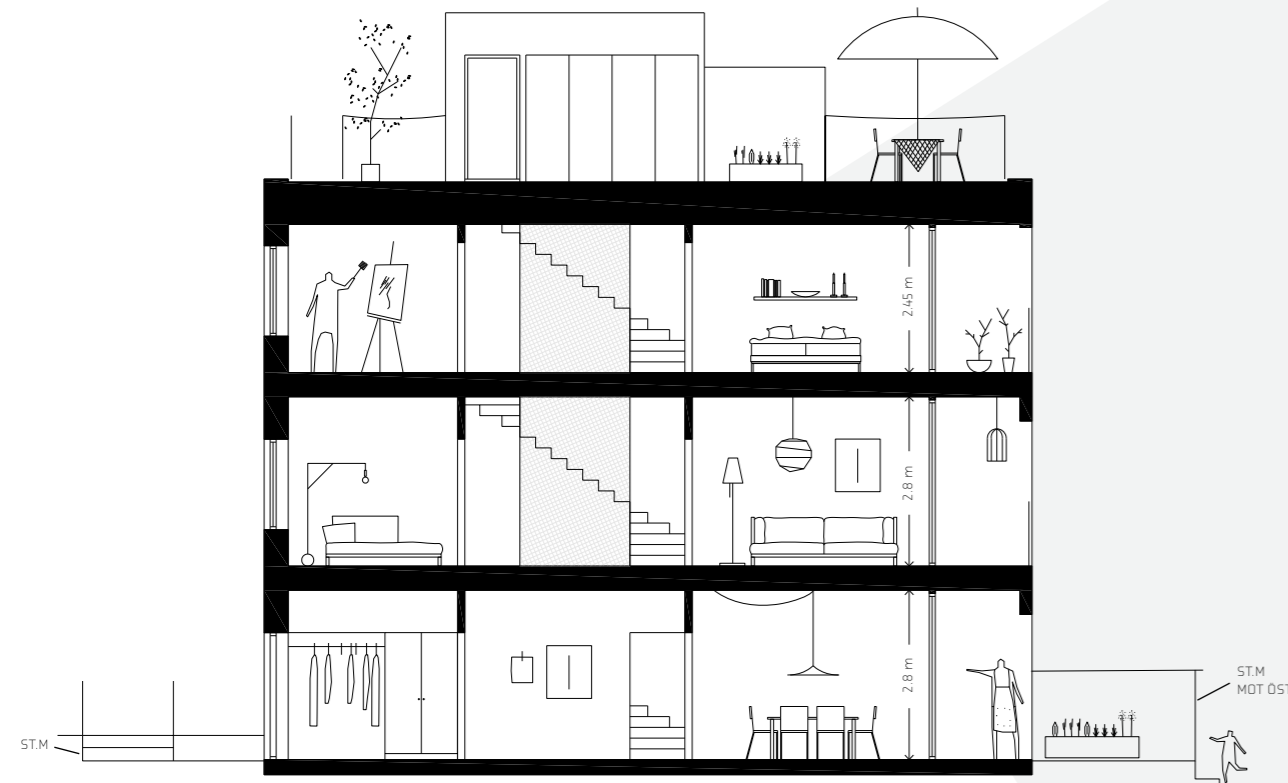
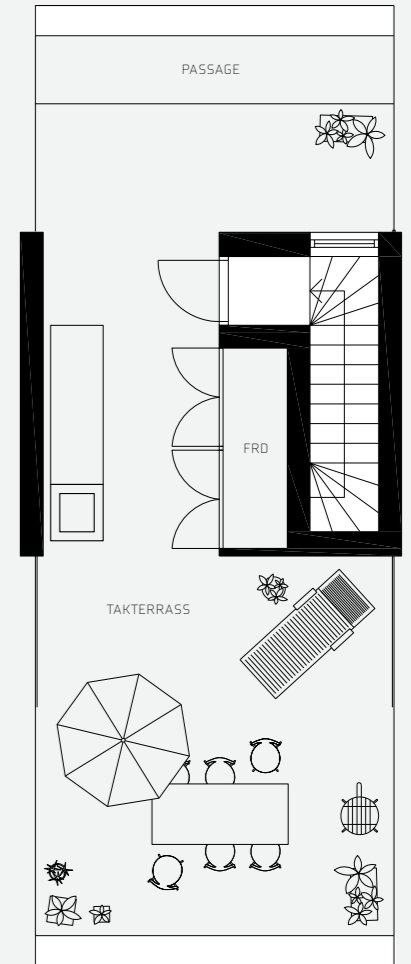
PLAN 1:



PLAN 2:



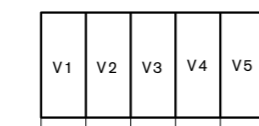
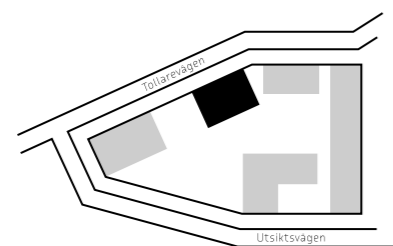
TAKTERRASS:



PRINCIPSEKTION (EJ SKALENLIG)

## FÖRKLARINGAR:

- ▶ Entré
- ST.M Stödmur  
(Stödmur varierar i höjd: ca -0,4 - +1,5 m)
- FRD Förråd
- G Garderob
- K/F Kyl/frys
- DM Diskmaskin
- H Induktionshäll
- TM/TT Tvättmask./torkt.
- Ö.S Öppen spis (Kamin)
- KH Kapphylla
- ☐ Schakt



AVVIKELSER KAN FÖREKOMMA

